

## **Appendix VIII– Federation Strategy Diagrams and Naming Examples**

## **TABLE OF CONTENTS**

1.	Federation Strategy .....	VIII-1
1.1.	Federation Strategy for Field 3.2 (System): Building .....	VIII-2
1.2.	Federation Strategy for Field 3.2 (System): District Cooling System, Electrical Power Supply, Gas Supply, Stormwater Drainage, Telecommunications .....	VIII-3
1.3.	Federation Strategy for Field 3.2 (System): General Site Information, Geotechnical, Landscape .....	VIII-4
1.4.	Federation Strategy for Field 3.2 (System): Sewerage .....	VIII-5
1.5.	Federation Strategy for Field 3.2 (System): Water Supply .....	VIII-6
1.6.	Federation Strategy for Field 3.2 (System): Road and Highway Structures.....	VIII-7
2.	Naming Examples for BIM Model.....	VIII-8
2.1.	Naming Example – a Subway Located in Volume C1 .....	VIII-8
2.2.	Naming Example – Sewage Pumping Station in Volume C2 .....	VIII-9
2.3.	Naming Example – a Market in Volume C6 .....	VIII-10
3.	Naming Example for Drawings Generated from BIM Model.....	VIII-11
3.1.	Naming Example of Drawings .....	VIII-11

### **List of Figures**

Figure App VIII-1 Federation Strategy for Field 3.2 (System): Building .....	VIII-2
Figure App VIII-2 Federation Strategy for Field 3.2 (System): District Cooling System, Electrical Power Supply, Gas Supply, Stormwater Drainage, Telecommunications .....	VIII-3
Figure App VIII-3 Federation Strategy for Field 3.2 (System): General Site Information, Geotechnical, Landscape .....	VIII-4
Figure App VIII-4 Federation Strategy for Field 3.2 (System): Sewerage .....	VIII-5
Figure App VIII-5 Federation Strategy for Field 3.2 (System): Water Supply .....	VIII-6
Figure App VIII-6 Federation Strategy for Field 3.2 (System): Road and Highway Structures.....	VIII-7
Figure App VIII-7 Naming Example for a Subway.....	VIII-8
Figure App VIII-8 Naming Example for Combined Model .....	VIII-8
Figure App VIII-9 Naming Example for Sewage Pumping Station .....	VIII-9
Figure App VIII-10 Naming Example for Different Project .....	VIII-9
Figure App VIII-11 Naming Example for a Market Building .....	VIII-10
Figure App VIII-12 Naming Example for the Market Building with MEP BIM Models .....	VIII-10
Figure App VIII-13 Naming Example of Drawings Generated from BIM Model .....	VIII-11

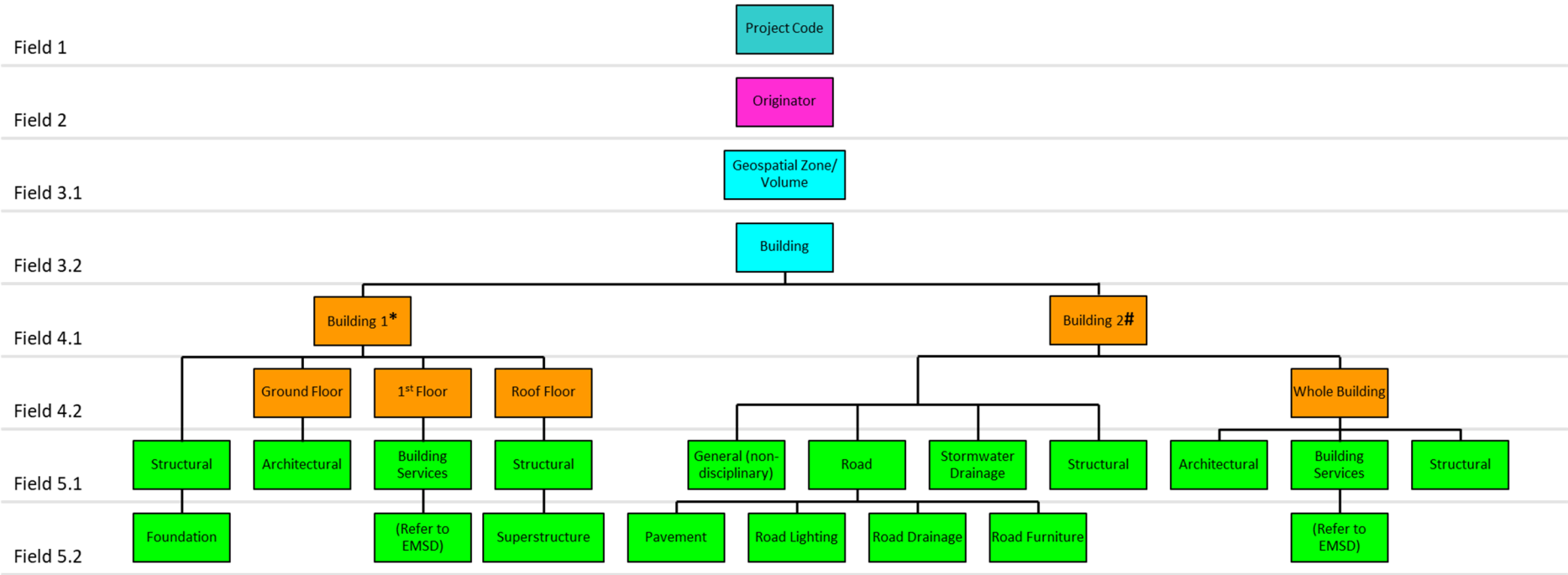
## **1. Federation Strategy**

Figure App VIII-1 to Figure App VIII-6 are examples demonstrating the federation strategies for different systems within a project. As some items may not be included in the figures, refer to Appendix X for the list of common codes.

In Figure App VIII-1 below, it is not mandatory for Architectural, Structural and Stormwater Drainage disciplines to be further subdivided into subdiscipline model files. Also, in Figure App VIII-6, pavement, road drainage, road lighting, road furniture and noise barrier are known subdisciplines, while walkway cover, subway cover and concrete structural frame of lift tower should belong to other disciplines such as Architectural and Structural to facilitate information container breakdown.

1.1. Federation Strategy for Field 3.2 (System): Building

Figure App VIII-1 Federation Strategy for Field 3.2 (System): Building

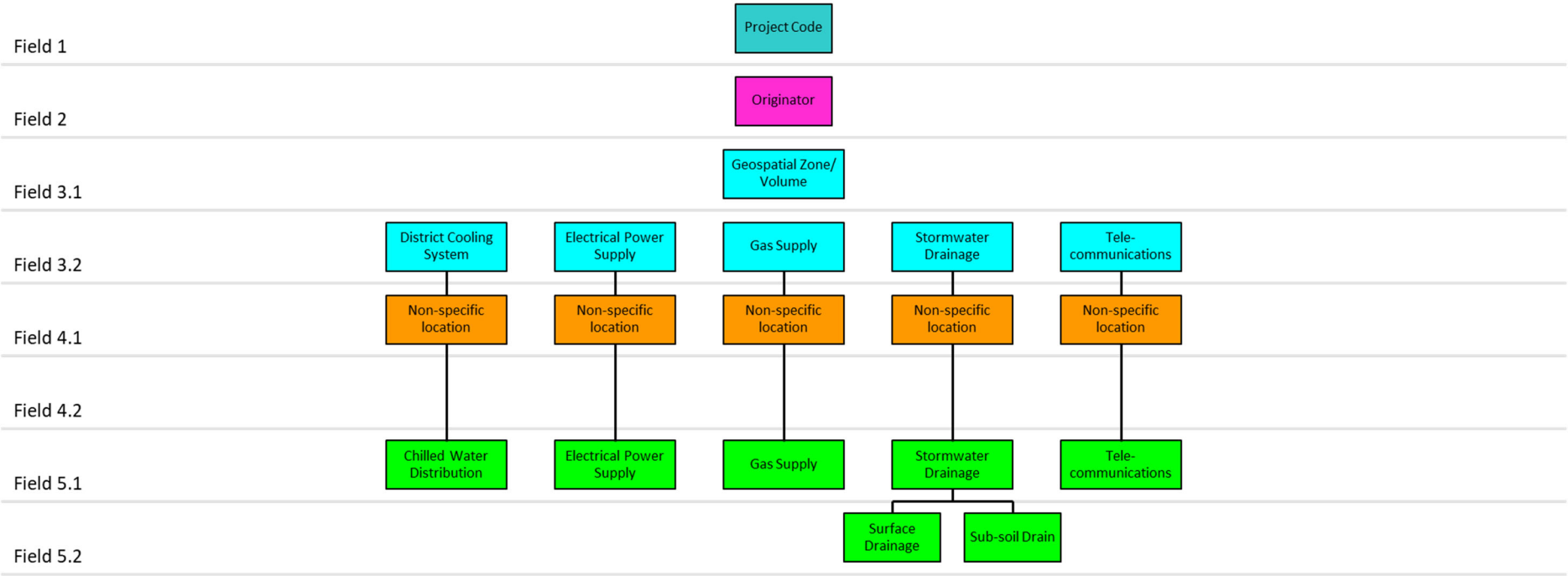


\* Building 1 demonstrates a multi-story building, such as residential buildings and shopping malls, for which field 4.2 (sub-location) shall be used to indicate different levels within the building.

# Building 2 demonstrates a whole building, such as pumping stations (or as specified by information owner), for which “Whole Building” could be adopted for field 4.2.

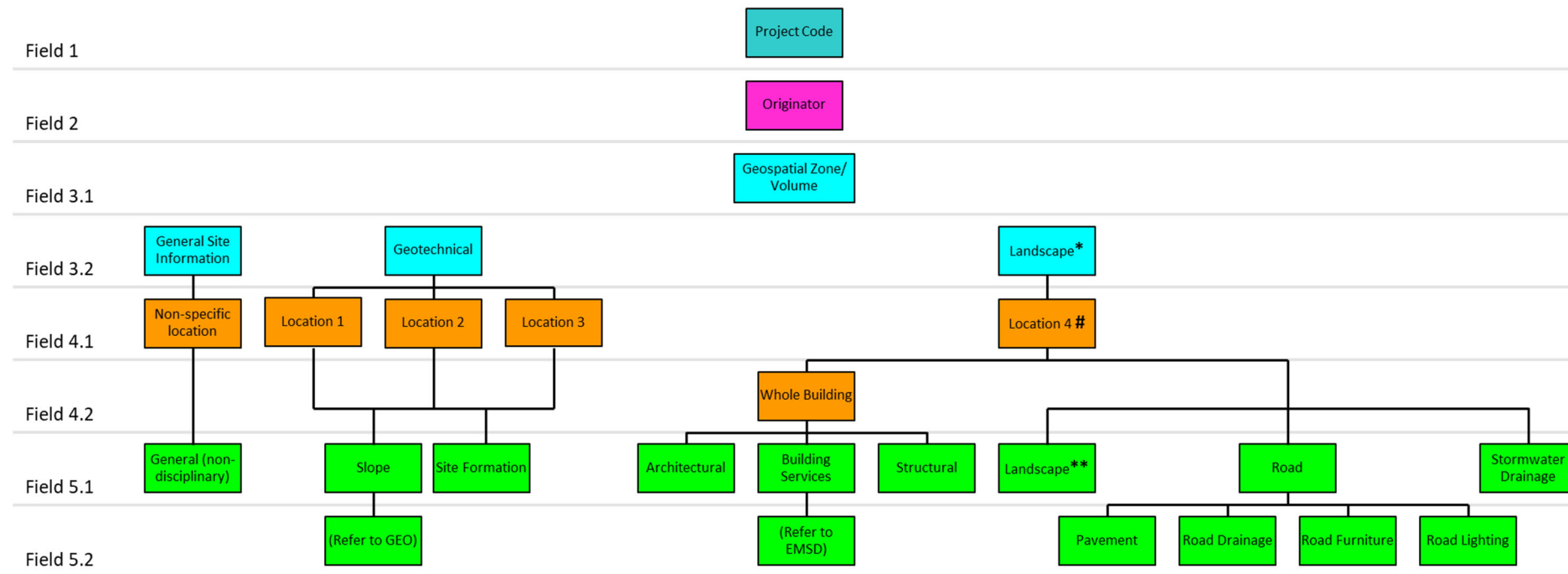
1.2. Federation Strategy for Field 3.2 (System): District Cooling System, Electrical Power Supply, Gas Supply, Stormwater Drainage, Telecommunications

Figure App VIII-2 Federation Strategy for Field 3.2 (System): District Cooling System, Electrical Power Supply, Gas Supply, Stormwater Drainage, Telecommunications



1.3. Federation Strategy for Field 3.2 (System): General Site Information, Geotechnical, Landscape

Figure App VIII-3 Federation Strategy for Field 3.2 (System): General Site Information, Geotechnical, Landscape



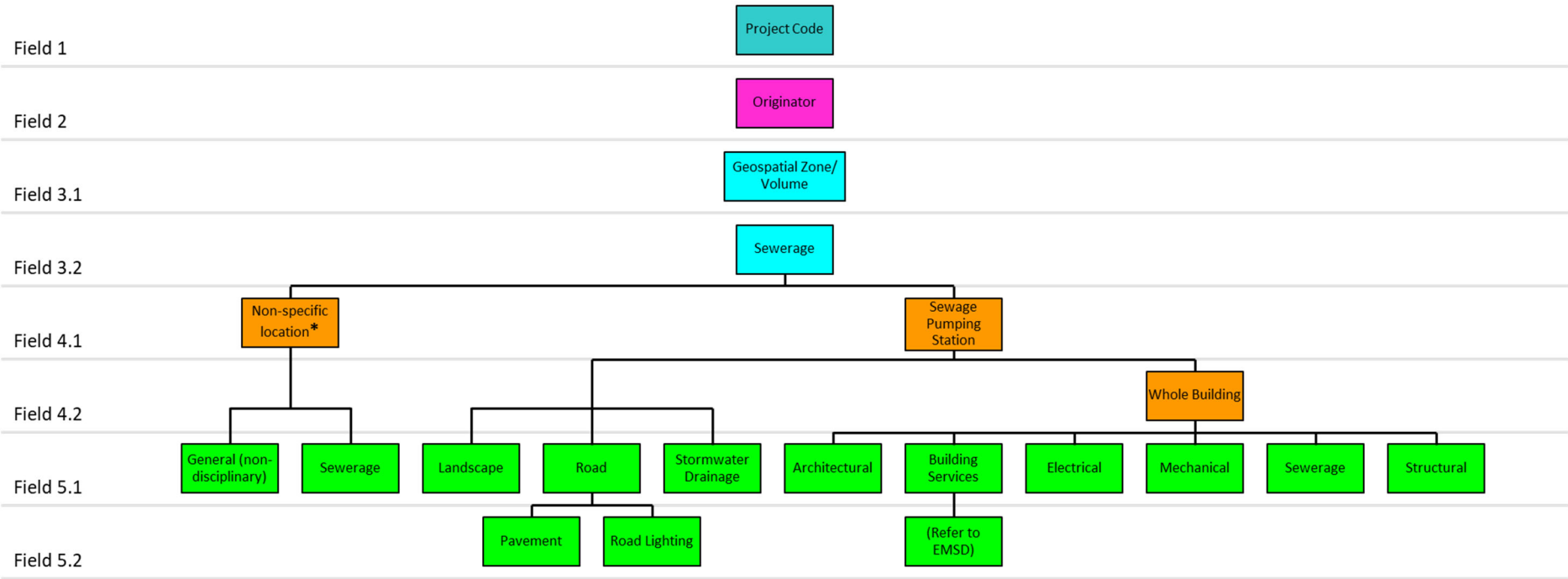
\* Landscape is Field 3.2 (System) when it is used to define all elements within a boundary of a country park, neighbourhood park, etc.

\*\* Landscape is Field 5.1 (Discipline) when it deals specifically with landscape elements such as hardscape, softscape, planting, landscape features, etc.

# Location IDs for country parks, marine parks, parks and gardens may include public toilets, recreational facilities, campsites, etc.

1.4. Federation Strategy for Field 3.2 (System): Sewerage

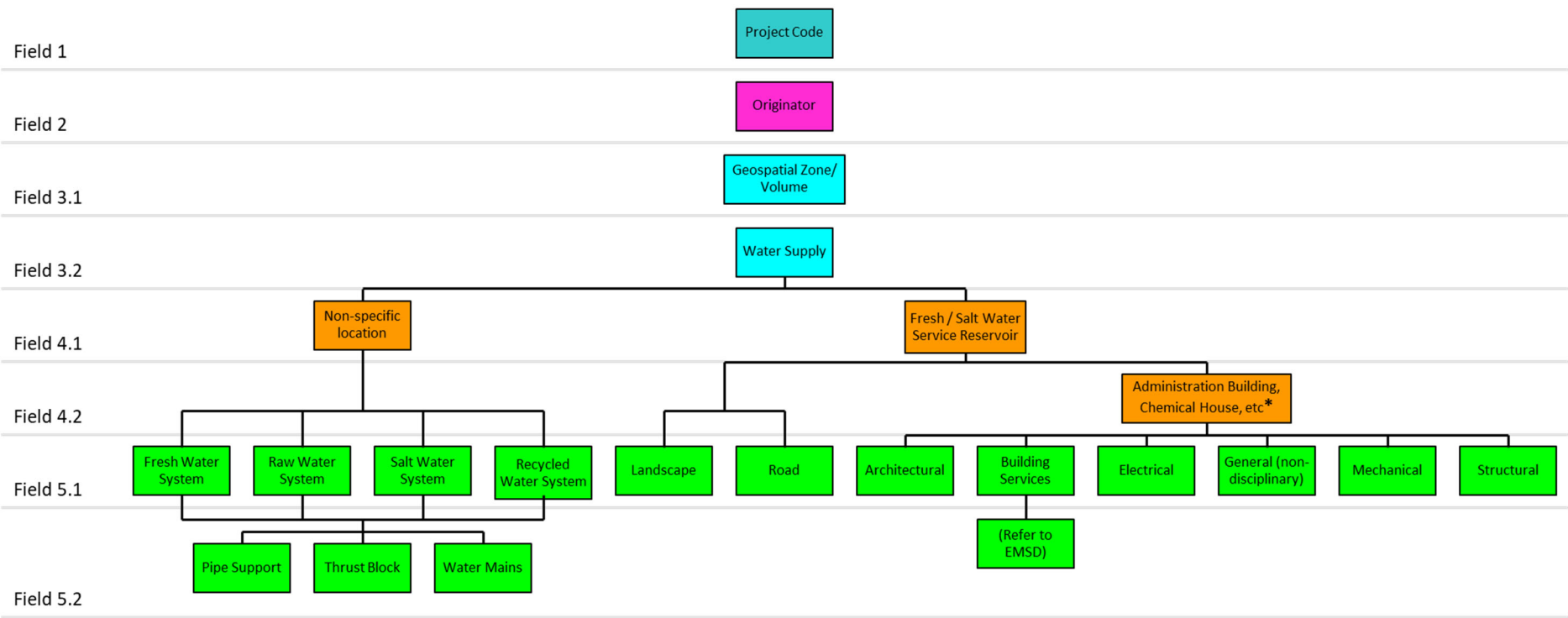
Figure App VIII-4 Federation Strategy for Field 3.2 (System): Sewerage



\* Non-specific location pertains to the area outside of Sewage Pumping Station.

1.5. Federation Strategy for Field 3.2 (System): Water Supply

Figure App VIII-5 Federation Strategy for Field 3.2 (System): Water Supply

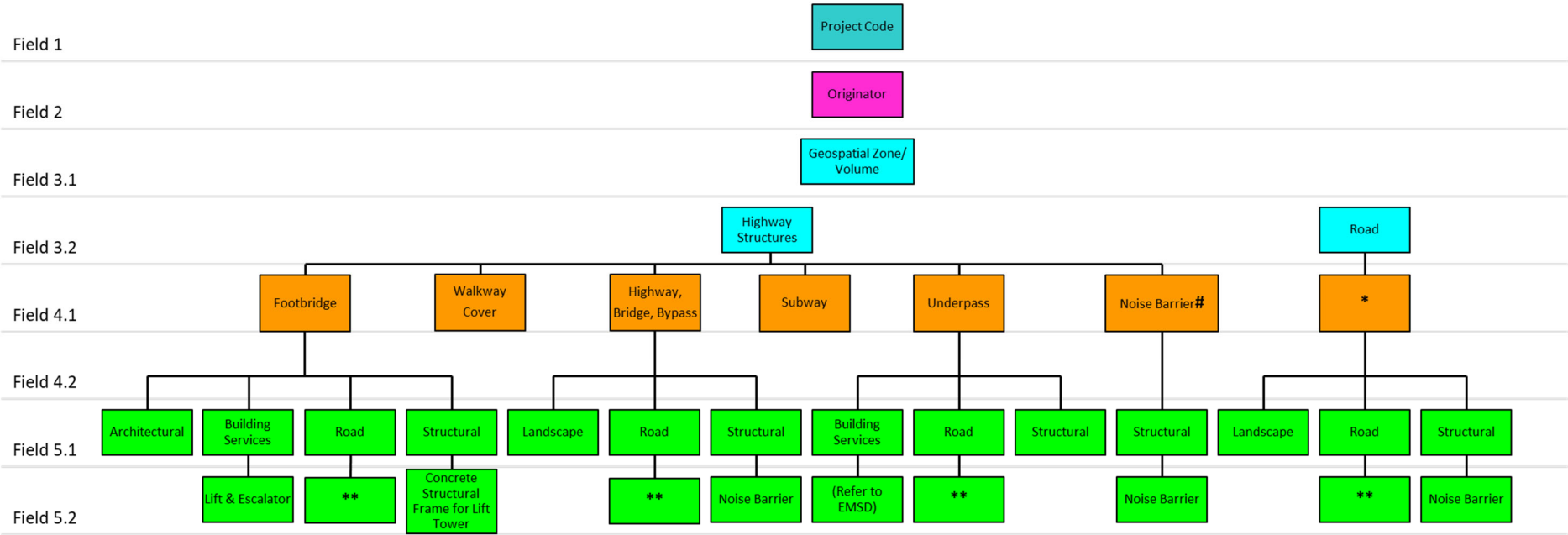


\* Building blocks without water supply functions (e.g. Offices, Staff Quarters, Customer Enquiry Centre) are suggested to be grouped under Building System.



1.6. Federation Strategy for Field 3.2 (System): Road and Highway Structures

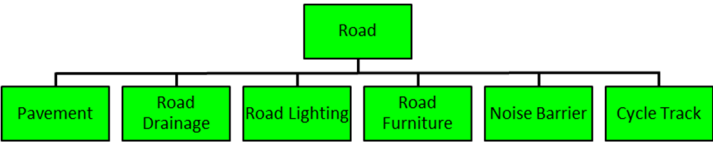
Figure App VIII-6 Federation Strategy for Field 3.2 (System): Road and Highway Structures



# Noise barrier can be assigned as Location ID independent of the adjacent road. If the noise barrier exceeds a certain size, it should be assigned under the discipline “Structural”.

\* Location ID for roads (e.g. abbreviation of road names)

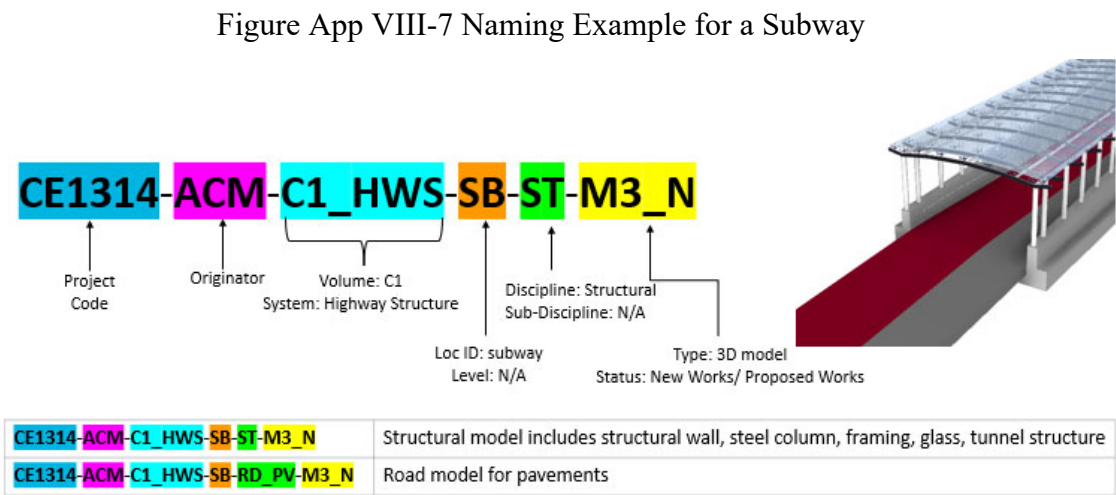
\*\* The following sub-disciplines are applicable to Road discipline models.



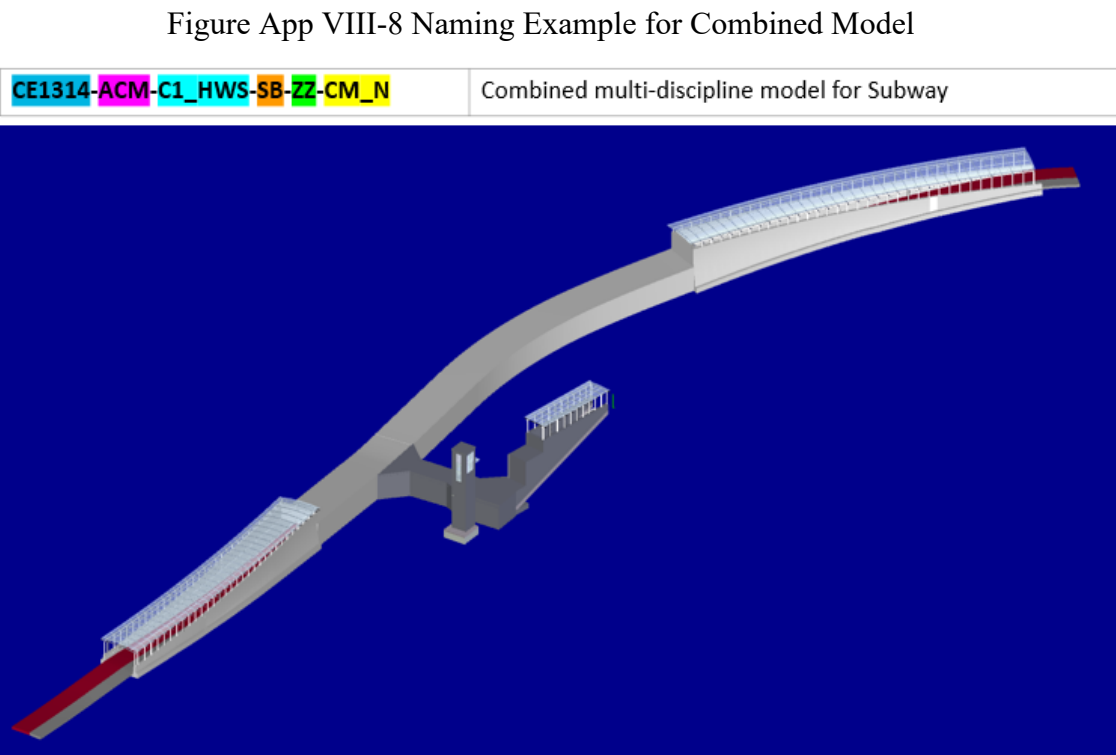
2. Naming Examples for BIM Model

2.1. Naming Example – a Subway Located in Volume C1

- a) Naming example for a subway BIM model is as follows.



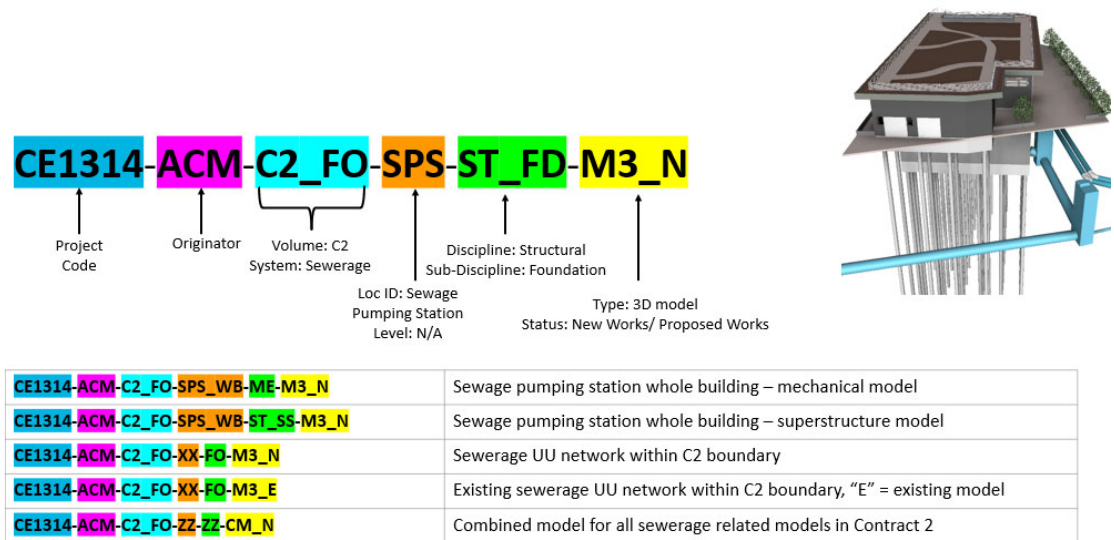
- b) Naming example for the subway BIM model combined with multiple disciplines’ BIM models is as follows. These BIM models can be combined as one model based on the defined naming.



## 2.2. Naming Example – Sewage Pumping Station in Volume C2

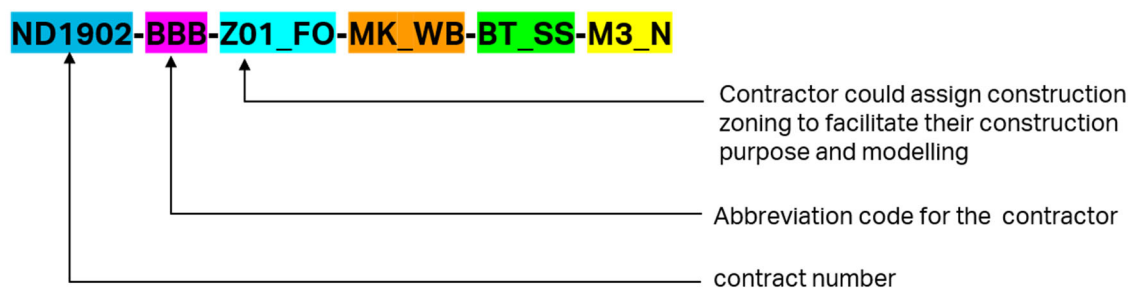
- a) Naming example for sewage pumping station BIM model is as follows.

Figure App VIII-9 Naming Example for Sewage Pumping Station



- b) When project is in construction stage, some naming fields should be updated accordingly. An example with updated naming fields is as follows.

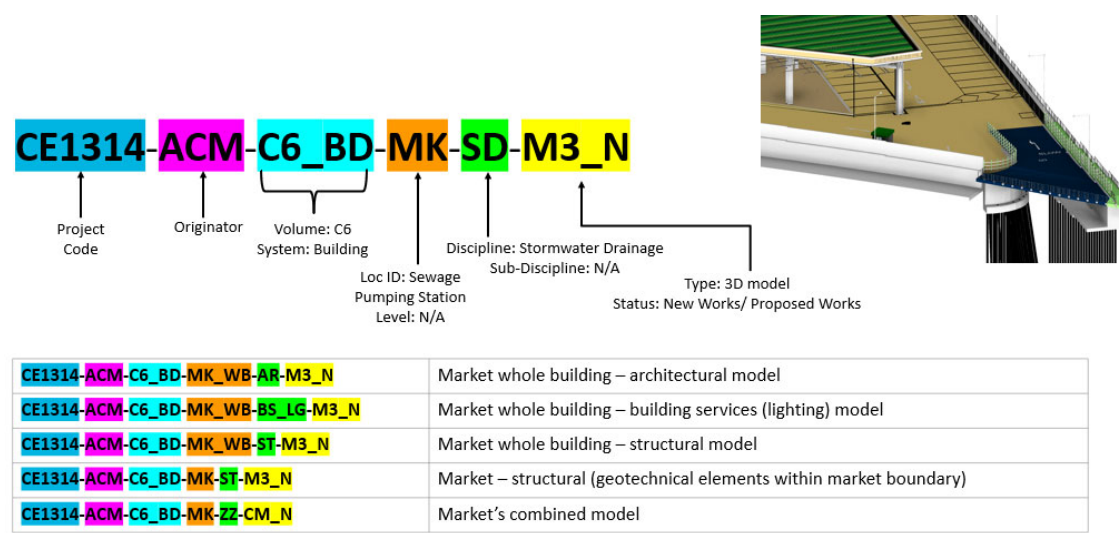
Figure App VIII-10 Naming Example for Different Project



2.3. Naming Example – a Market in Volume C6

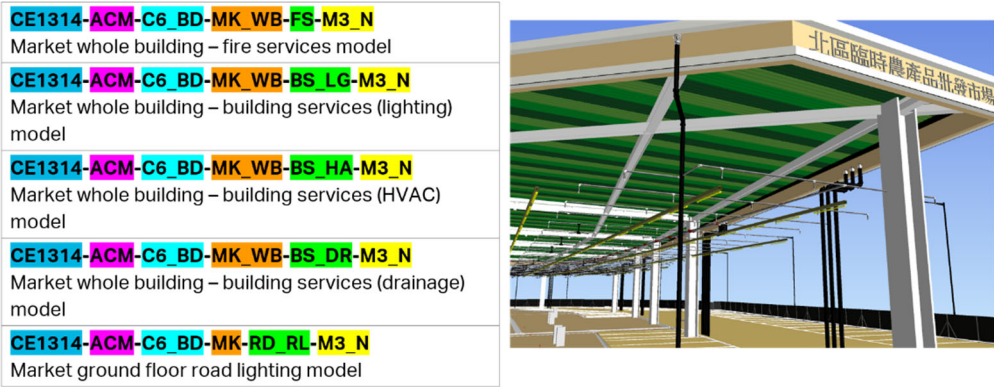
a) Naming example for a market BIM model is as follows.

Figure App VIII-11 Naming Example for a Market Building



b) In addition, for MEP details of the market building, the naming would be handled as follows:

Figure App VIII-12 Naming Example for the Market Building with MEP BIM Models



### 3. Naming Example for Drawings Generated from BIM Model

#### 3.1. Naming Example of Drawings

WDs could consider to adopt the model naming format for drawing file naming. For example, abbreviation code of “DR” (meaning 2D Drawings) under Field 6.1 (Types) and 3-digit codes acting as the drawing number under Field 7 (Sequential Number) could be used. Naming example of drawings is as follows

Figure App VIII-13 Naming Example of Drawings Generated from BIM Model

